

FAST FOOD SATANIC SYMBOLS: PANERA BREAD



I'm not saying you can't eat here. I'm not saying the employees have a clue about any of this. The founder of this company knows full well what all of this means and it stands for who he serves. For those familiar with this ministry you know that all major companies and Christian organizations have bowed to satan. They put their symbols out in plain sight. satan's elect are feeding the world. Only if you are fortunate enough to grow your own food or know a local farmer are you getting something with any quality or nutrition left in it at all.



This is the Greek god pan also known as lucifer and satan.

Era

An era is a span of time defined for the purposes of chronology or historiography, as in the regnal eras in the history of a given monarchy, a calendar era used for a given calendar, or the geological eras defined for the history of Earth.

[W More at Wikipedia](#)



He is identified primarily with the noon day sun.

Panera Bread

	
	Panera
	BREAD®
Type	Subsidiary
Industry	Fast food
Founded	1987; 31 years ago Kirkwood, Missouri, US
Founder	Ken Rosenthal Ronald M. Shaich Louis Kern
Headquarters	Sunset Hills, Missouri
Number of locations	2100 stores (November 2017)

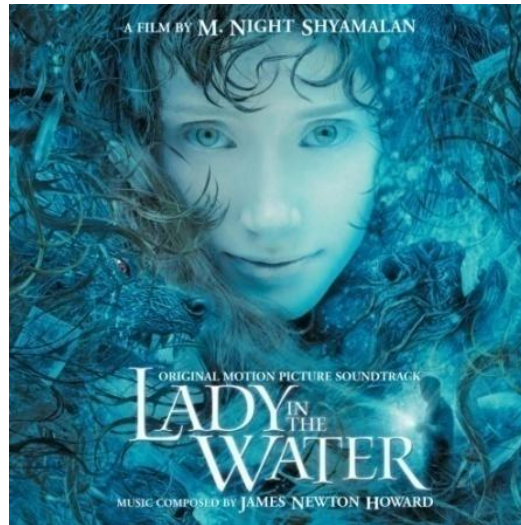
How appropriate that a restaurant to the sun god would be located on SUNset Hills. So where is the goddess? Is she present? You usually find them together.



Here she is. First, she is holding a loaf of bread like a baby. That is Semiramis and Tammuz or the queen of heaven and tammuz. Mother natura, gaia and her baby horus, the reincarnated sun god. On the loaf there are 3 6's = 666. There's a big six for her arm and chest area. Her eyes are like 6's as well. This is loaded with 6's.



Mistress of the Sea Sulainor



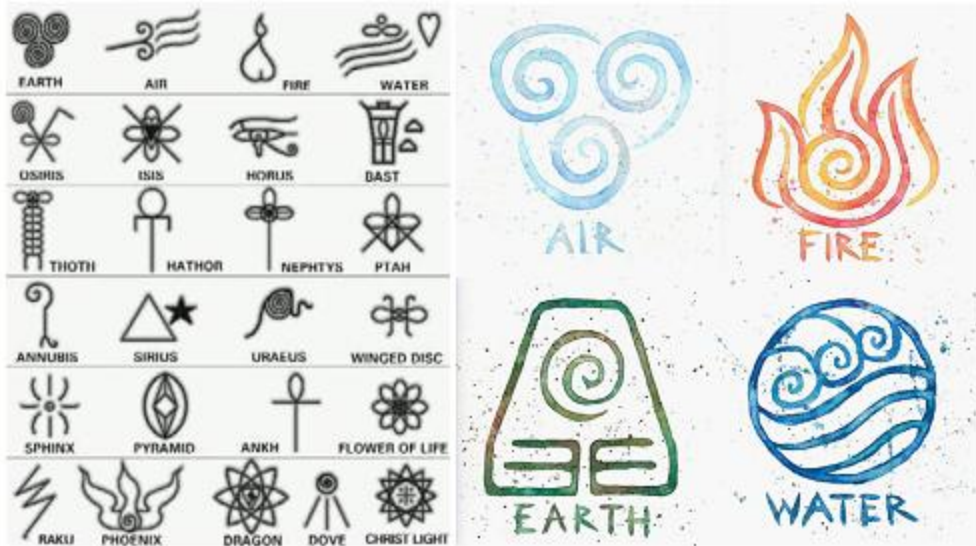
They love to make movies depicting their gods and goddesses

School of Nursing Pin

The seal of Viterbo University has four symbols—the cross, a rose, three wavy lines, and a torch. Each of these symbols has a meaning for the university.

- The cross symbolizes Christianity.
- The three wavy lines indicate the institution's geographic location where three rivers join.
- The torch of learning symbolizes the primary function of the university.
- The rose recalls the patroness of the University, St. Rose of Viterbo.





Wind Symbols



Letter Name	Proto-Sinaitic	Early Phoenician	Greek	Phonetic Value	Letter Meaning
samekh		𐤌	Ξ	[s]	
*ayin	⊖	⊖	Ο	[ʿ]	eye
pe		𐤎	Π	[p]	
tsade	𐤏	𐤏	Μ ²	[s]	
qoph	⚙	⚙	Ϙ ³	[q]	
resh	𐤑	𐤑	Ρ	[r]	head
shin	𐤒	𐤒	Σ	[ʃ]	
taw	𐤓	𐤓	Τ	[t]	mark (?)

י	ט	ח	ז	ו	ה	ד	ג	ב	א
Yod (Y)	Tet (T)	Chet (Ch)	Zayin (Z)	Vav (V/W)	He (H)	Dalet (D)	Gimel (G)	Bet (B/V)	Alef (silent)
10	9	8	7	6	5	4	3	2	1
ע	ס	נ	מ	ל	כ	ק	פ	צ	ש
Ayin (silent)	Samech (S)	Nun (N)	Nun (N)	Mem (M)	Mem (M)	Lamed (L)	Khaf (Kh)	Kaf (K/Kh)	
70	60	50	50	40	40	30	20	20	
ת	ש	ר	ק	ץ	ח	פ	צ	ש	
Tav (T)	Shin (Sh/S)	Resh (R)	Qof (Q)	Tsadeh (Ts)	Tsadeh (Ts)	Feh (F)	Peh (P/F)		
400	300	200	100			90	80		

The learned pagan doctors of witchcraft understood the pagan symbolism of the serpent. Note how the three wavy lines relate to the number 666. Consider the following quote :-

“ The number 666 was written in serpentine letters like SSS, VVV, ZZZ = 666. They also arranged the letters different ways; sometimes they would turn them upside down or sideways. The SSS sometimes could be seen with a line drawn through the middle of all three S's and turned sideways. This is the origin of the popular amulet called the Oriental cross.

Another way the number 666 was hidden which can be unmasked, is in learning the origin of the trident sign. Earlier we learned that the Sun-god's weapon was the lightning bolt and it was stylized into a pitchfork. The pitchfork had three prongs to it, hence, we have today the trident sign, which by the way is used to symbolize the number 666 also.” *“The Illuminati 666” by William Josiah Sutton. pp.63,64.*



The symbols occultists have worn to secretly display the sacred number 666 of Astrology.



3 Waves like wind or fire, 3 lines for the s which is a 6 and the snake L: CBN the C = a snake, almost looks like a circle or pit with a snake coming out, one side has a moon. M: The wavy lines are for snakes/wind/water/energy – The black book almost looks like a bird face on the right R: Two sliver moons, Double snake ouroboros, the three lines form what looks like a monster claw around the world, in Pythagorean numerology the O = 6 so with the big o, then the “o” in Joel and then the “O” in Osteen you have 666. The sliver of the moon on the right is also broken and looks like fangs.



Bold with the color ORANGE

Pythagorean Numerology

1	2	3	4	5	6	7	8	9
A	B	C	D	E	F	G	H	I
J	K	L	M	N	O	P	Q	R
S	T	U	V	W	X	Y	Z	

Spell the word ORANGE and add it up and you get 33 and that stands for freemasonry. Deus in latin means god – lucifer.

<http://twoworlds.wikidot.com/theology:deities>

<http://www.temcat.com/013-Spiritualism/3-WAVY-LINES.pdf>

[http://benabraham.com/html/would the lord deem this logo acceptable-.html](http://benabraham.com/html/would_the_lord_deem_this_logo_acceptable-.html)